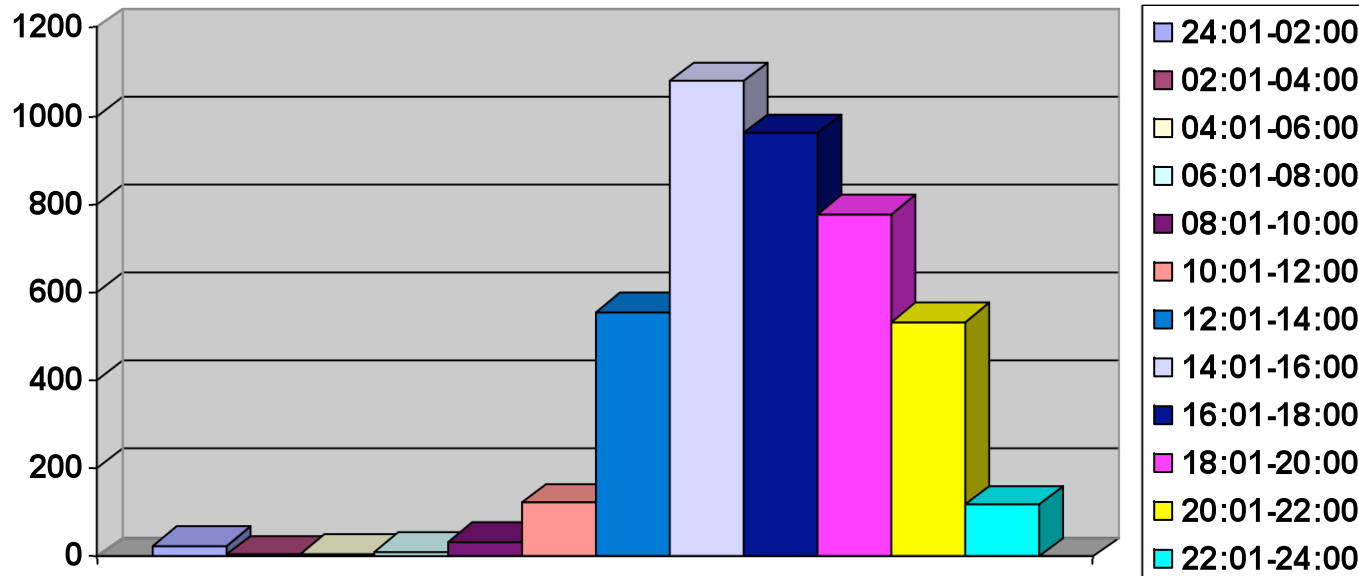




Monument Security

2010 Theft Incident Time Analysis

Total theft Incidents =4228

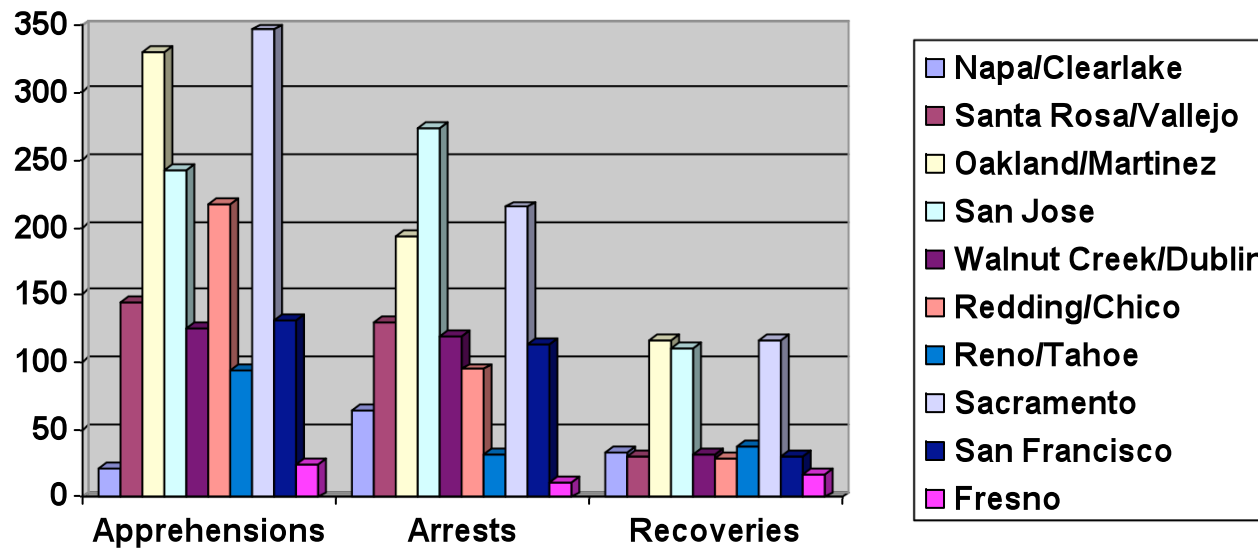


48% of all apprehensions take place between the hours of 2pm – 6pm



2010 Apprehension, Arrest & Recovery Analysis

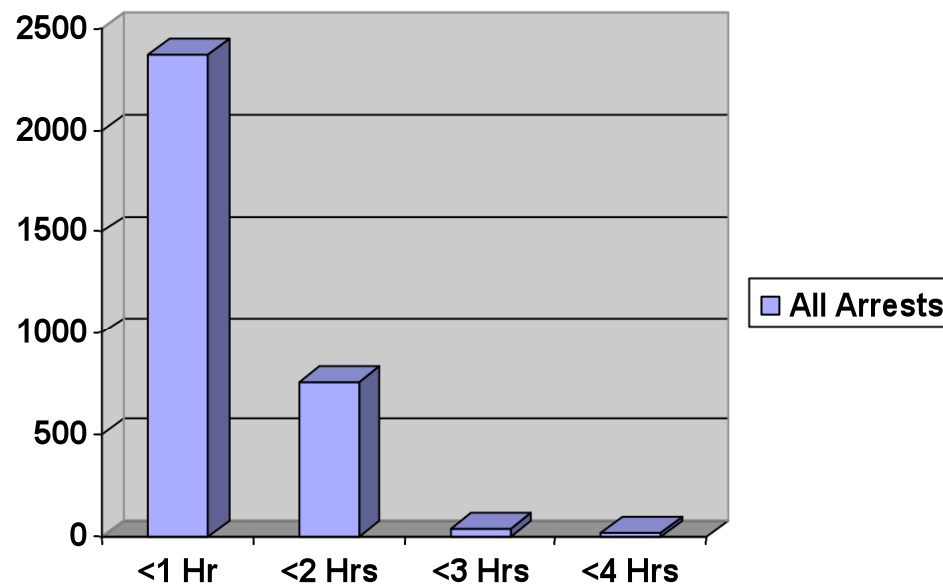
NORTHERN CALIFORNIA





Monument Security

2010 Arrest Hold Time Analysis

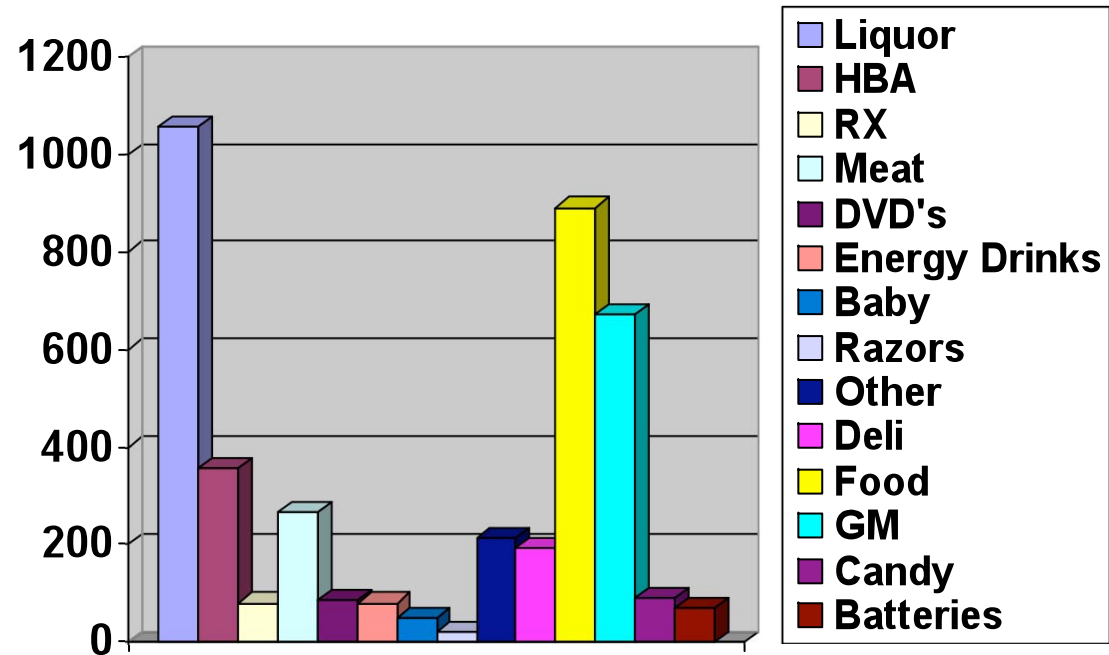




Monument Security

2010 Merchandise Theft Item Analysis

Total theft Incidents =4228

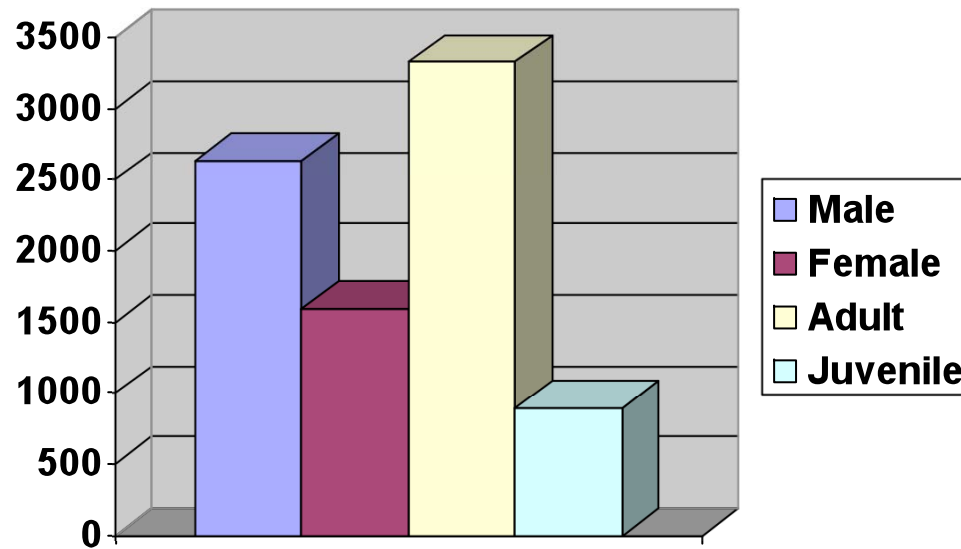




Monument Security

2010 Suspect Apprehension Analysis

Total theft Incidents =4228





Monument Security

2010 Apprehension, Arrest & Recovery Analysis

Texas

